

DuraWeave®

Strength & Durability

DuraWeave® is a heavyweight fabric constructed of two parts, the scrim and 4 mil coatings. The scrim, which is the woven part of the material, is constructed of individual tapes. The unique composition of the tapes and how they are woven together gives DuraWeave® its tremendous rip, tear and puncture strength. The specialized 4 mil coatings provide a more uniform and thicker protection layer for the scrim, increasing ultraviolet protection. The thicker coatings are more resistant to abrasion damage during both fabrication and installation of the cover making it less likely to crack and allow water penetration than the standard coating used by competitors. There is also a wider range of acceptable operating conditions for welding and greater adhesion of the coatings to the scrim. DuraWeave® comes with a 15-year pro rata warranty.

Safe & Environmentally Friendly

No toxic chemicals are used in the production of DuraWeave®. All scraps and used covers are 100 percent recyclable.

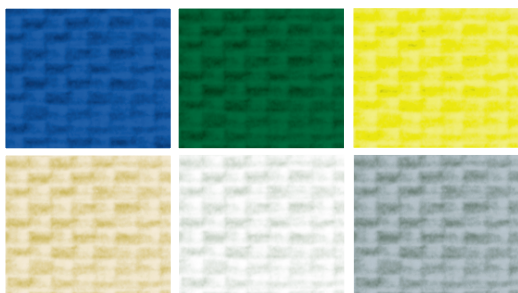
Bright Atmosphere

DuraWeave® covers provide an exceptionally bright and pleasant interior atmosphere. Natural light penetrates the fabric while the unique composition of the tapes ensures it remains pliable and resistant to ultraviolet damage. The DuraWeave® fabric is thermally non-conductive ensuring a building that is warmer in the winter and cooler in the summer. The fabric is available in a variety of attractive colors, all featuring a bright white underside that further enhances the interior brightness. If you need to block the light, DuraWeave® Blackout fabric is available. The high quality fabric, with 6 mil coatings (specs available upon request), provides total ultraviolet resistance.

The Best in the Business

As North America's leading manufacturer of fabric-covered buildings, Cover-All Building Systems has partnered with Intertape Polymer Group, a leader in the fabric industry, to develop the finest heavy-weight polyolefin fabrics on the market today. Cover-All's commitment to ongoing product improvement and the desire to provide a strong, durable and cost-effective alternative to existing cover fabrics led to the development of the DuraWeave® line of products, manufactured by Intertape exclusively for Cover-All.

DuraWeave® Colors



DuraWeave® Specifications

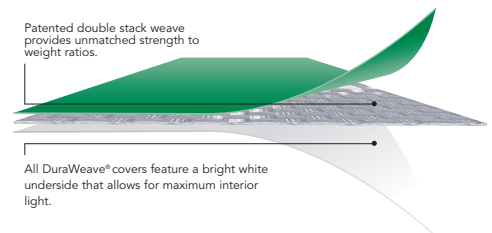
Weave	16 x 16 psi woven clear HDPE scrim	
Coating Thickness:	4.0 mils average each side (94 g/m ²)	
Coating Composition:	Modified LDPE coating with UV protection	
Weight:	12.5 oz/yd ² (373 g/m ²) +/- 5%	
Thickness:	23 mils (0.635mm)	ASTM D5199
Hydrostatic Resistance Method:	171 psi (1180 kPa)	ASTM D751A
Grab Tensile:	Warp: 340 lbs. (1511 N)	ASTM D5034
	Weft: 340 lbs. (1511 N)	ASTM D5034
Strip Tensile:	Warp: 250 lbs. (1112 N)	ASTM D5035
	Weft: 250 lbs. (1112 N)	ASTM D5035
Tongue Tear:	Warp: 115 lbs. (511 N)	ASTM D2261
	Weft: 115 lbs. (511 N)	ASTM D2261
Mullen Burst:	675 psi (4658 kPa)	ASTM D3786
Cold Crack:	Minus 60°C	ASTM D2136

DuraWeave® Fire Ratings

Test / Standard	Flame Spread	Smoke Developed	Char Length
ASTM E84	FS10	SD 58	6.5
CAN/ULC 5102.2 – M88	FS15	SD 125	6.5

copies of all certificates and test results can be found in the documents "Cover-All Component Testing", available from your local Cover-All® Dealer

DuraWeave® Covers



"DuraWeave offers the best combination of weight, strength and performance available in today's marketplace. As we look back to the beginning of our relationship, Cover-All's challenge of building a better product has led to this cutting edge fabric."



WILLIAM A. BARNES,
 Director of Sales and Marketing
 Woven Products, Intertape Polymer Group Inc.



1-800-268-3768 • www.coverall.net